

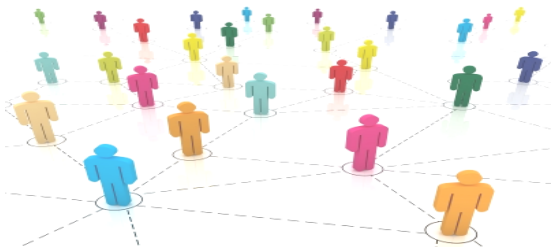


## What are Community Link Practitioners ?

A Community Link Practitioner (CLP) works in your GP Practice and is part of the Practice Team.

Their role is to help you find out and access services to improve your health and well being. Services might include community groups in your local area, advice about money and benefits, coping as a carer, or housing.

The CLP can also put you in touch with services that can help you talk through your worries or problems such as isolation, loneliness or relationship difficulties



## What can the Community Link Practitioner do for me?

The Community Link Practitioner (CLP) will meet you either here at the GP Practice or other suitable place, via video link, phone call or text.

Whatever is best for you.

They will support you with issues that are important to you and give you time to discuss those issues. They will work with you to agree a plan to access local services and provide helpful information to meet your needs.



## Frequently asked Questions

**How can I access the service?**

**Ask your GP to refer you.**

**How long can I expect to wait?**

**You will be contacted as soon as possible following your referral.**

**How long can I receive support for?**

**No set time limits. Length of support is discussed with you and agreed with you.**

**Is there a charge for the service?**

**No, it is 100% free**

**Do the CLP's offer counselling?**

**No, but can give you details on professional services to help you.**

**Are the CLP's medically trained?**

**No, CLP's are purely there to connect you with community services.**